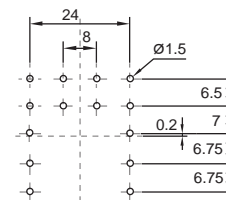


MRC series
S4-L, S4-P, S4-PO
Socket for soldering and printed circuit for relays C4-...

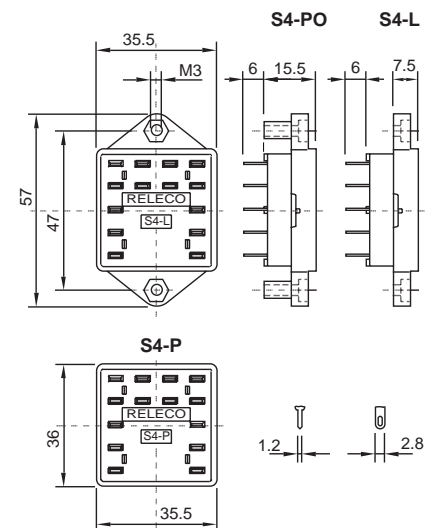
Type	S4-L 4-pole, flange panel mountable
	S4-P 4-pole, printed circuit
	S4-PO 4-pole, printed circuit with flange
Rated current	10 A
Specifications	
Rated load	10 A/250 V
Test voltage benachbarte Pole	2.5 kV rms 1 min
Ambient temperature	-30° C ... +60° C
Accessories	
Retaining spring, steel	S3-C



Printed circuit lay-out [mm]



Dimensions [mm]



Technical approvals, conformities



EN 60947-1, EN 61810-5