

QRC series
C9-E2x
14-pin, miniature relay, 2-pole, plug-in, faston

Type	C9-E2x/ ... V Sensitive relay 2 change-over contacts		
DC operating range	0,8 ... 1,7 x U_N		
Maximum contact load	5 A/250 V AC1	5 A/30 V DC1	
Recommended minimum contact load	1 mA/10 V (with 10 μ Au) 10 mA/10 V (standard contact)		

Contacts			
Material	Standard	Code 1	AgNi + 0,2 μ Au
	Optional,	Code 2	AgNi + 10 μ Au
Rated current	5 A		
Switch-on current max. (2,5 ms)	15 A		
Switching voltage max.	250 V		
AC load	1200 VA		
DC load	see fig. 2		

Coil			
Coil resistance	see table; tolerance ± 10 %		
Pick-up voltage	≥ 0,8 x U _N		
Release voltage	≥ 0,1 x U _N		
Nominal power	0,8 VA (AC)/0,5 W (DC)		

Coil table					
VAC	Ω	mA	VDC	Ω	mA
24	1K1	21	12	288	42
48	4K6	10	24	1K1	21
115	5K9	7	48	4K6	10
230	23K9	3,5	110	24K2	4,5

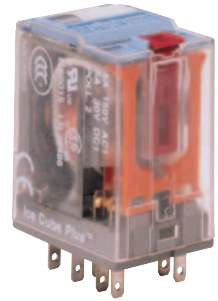
Insulation		Volt rms, 1 min
Contact open		1000 V
Contact/contact		2,5 kV
Contact/coil		2,5 kV
Insulation resistance at 500 V		≥1 GΩ
Insulation, IEC 61810-5		2,5 kV/3

Specifications	
Ambient temperature operation/storage	-40 (no ice)...60 °C /-40 ... 80 °C
Pick-up time/bounce time	10 ms/≤ 3 ms
Release time/bounce time	6 ms/≤ 1 ms
Mechanical life	AC: 10 Mill./DC: 20 Mill. switching cycles
AC voltage endurance at rated load	≥100000 switching cycles
Switching frequency at rated load	≤ 1200/h
Protection class	IP40
Weight	40 g

Standard types		
AC 50 Hz/60 Hz: 24, 48, 115, 230, (240)	C9-E21/AC ... V	C9-E22/AC ... V
LED	C9-E21X/AC ... V	C9-E22X/AC ... V
DC 24, 48, 110, 220	C9-E21/DC ... V	C9-E22/DC ... V
LED	C9-E21X/DC ... V	C9-E22X/DC ... V
Free wheeling diode	C9-E21DX/DC ... V	C9-E22DX/DC ... V
Polarity and free wheeling diode	C9-E21FX/DC ... V	C9-E22FX/DC ... V
AC/DC bridge rectifier 24 V, 48 V, 60 V	C9-E21BX/UC ... V	C9-E22BX/UC ... V

"..." Enter the voltage for full type designation

Accessories	
Socket:	S9-M, S9-L, S9-P, S9-P0
Operational accessories (blanking plug):	S9-NP, S9-OP



Connection diagram

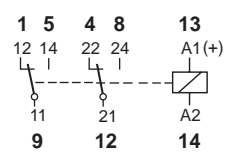


Fig. 1 AC voltage endurance

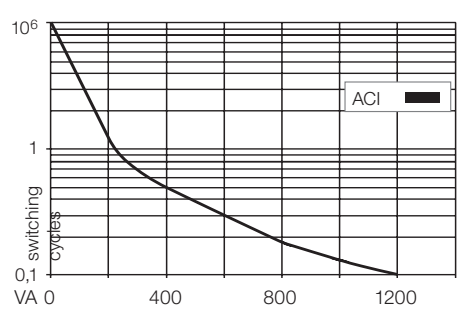
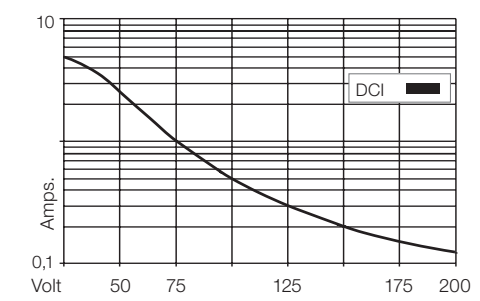
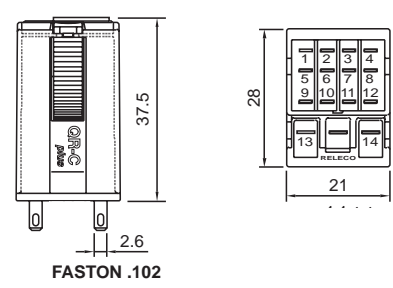


Fig. 2 DC load limit curve



Dimensions [mm]



Technical approvals, conformities

